

INDEPENDENT ELECTRICAL CONTRACTORS PRESENTS

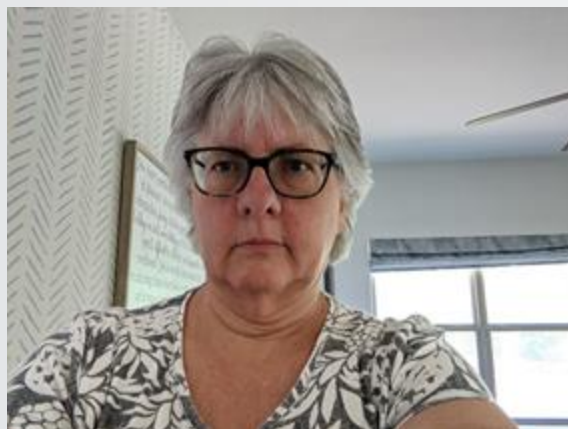
2022 **business summit**

SAVANNAH, GA | JANUARY 24-26

***The next Evolution of Estimating: How to
Leverage the Model for Better Bid
Accuracy and Project Execution***

A/E/C

Introduction



Judy Miller
Trimble
VDC Sales Engineer
judy_miller@trimble.com



Doug Elliott
Trimble
Product Manager
doug_elliott@trimble.com

What is Model Based Estimating?

Model Based Estimating connects your BIM 3D Model to your Estimating software, giving you:

- 1 Better project insight and visibility
- 2 Improved collaboration between key stakeholders - such as estimators, detailers, and project managers
- 3 More accurate project execution
- 4 Increased profits

Model-Based Estimating Addresses Contractor Challenges

"Re-Stripping" Estimates

Contractors have to do time consuming manual re-estimates throughout projects to gain insight and confidence.

Lack of Project Insight

Without model-based estimates or re-strips, contractors are hoping that their projects are on track and on budget.

Value Engineered Alternates

With good data comes good decisions. Example: What will be more cost effective; set screw, compression or Kwik-Fit?

Audience Poll

2022
business summit



Poll Question: Which of these challenges is the largest challenge for you?

1. The time it takes for “re-stripping”
2. The lack of project insight
3. Inability to value engineer material and installation decisions

Common Misconceptions

Model Based Estimating is not intended to replace 2D takeoff methods for project bids. Why?



Limited availability of a 3D model prior to bid



Insufficient level of fidelity of the 3D model prior

Our Model Based Estimating mission is to...



Provide purpose built workflows that deliver true customer value.



As solid connection between SysQue and Estimation MEP that is fast, easy and best of all flexible.

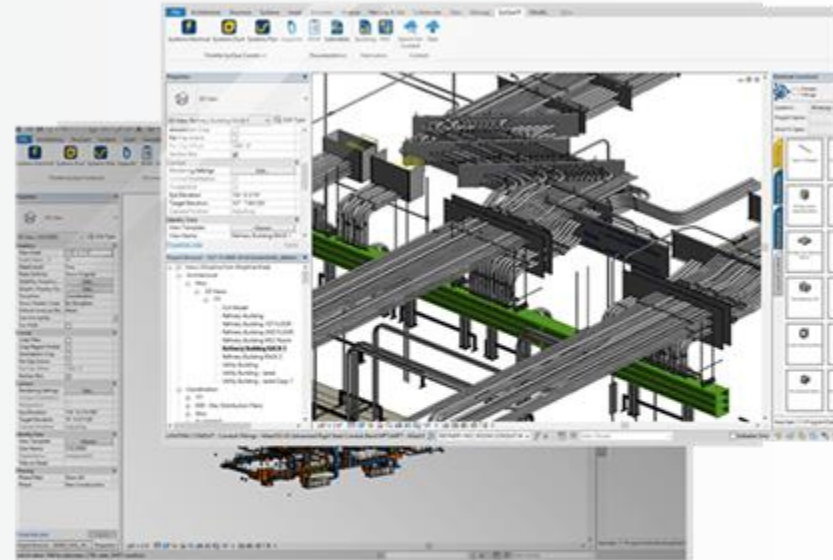


Workflow solutions that meet the needs of all three of the MEP trades but beginning with Mechanical Piping and Electrical.

Featured Product: SysQue

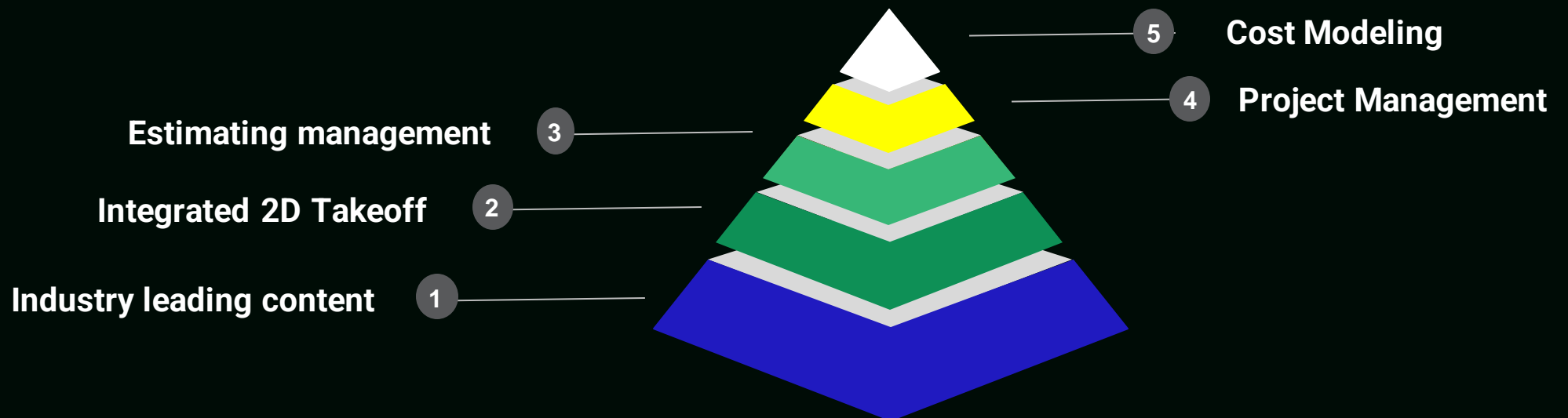
Enables detailers to design LOD 400 constructible models in Autodesk Revit with the world's largest library of real world, manufacturer specific MEP content. SysQue provides lots of modeling and detailing productivity tools to streamline modeling for 3D coordination.

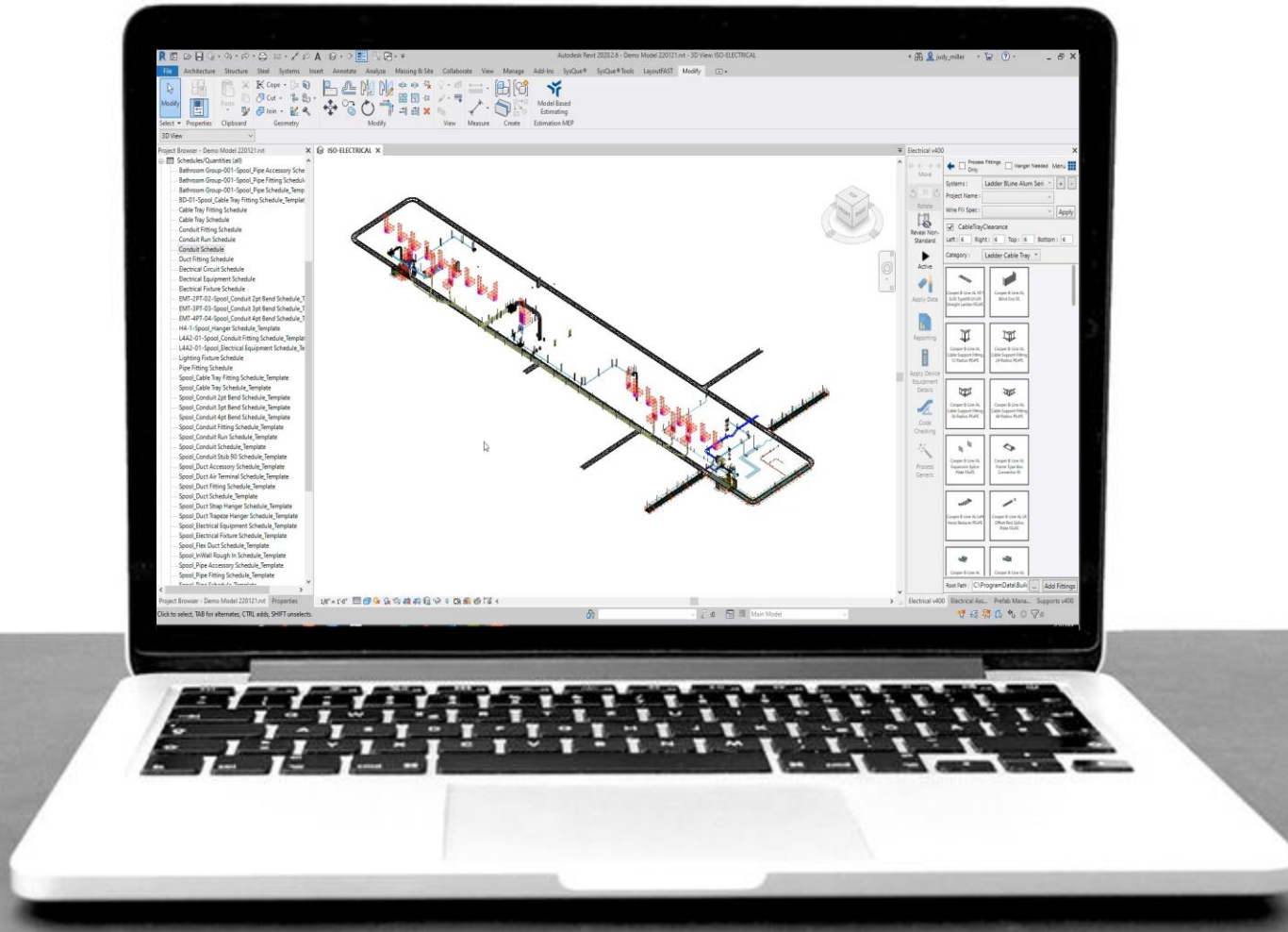
SysQue models are accurate and data rich and are used to help drive prefabrication and installation.



Featured Product: Estimation MEP

Enables detailers to design LOD 400 constructible models in Autodesk Revit with the world's largest library of real world, manufacturer specific MEP content. SysQue provides lots of modeling and detailing productivity tools to streamline modeling for 3D coordination.

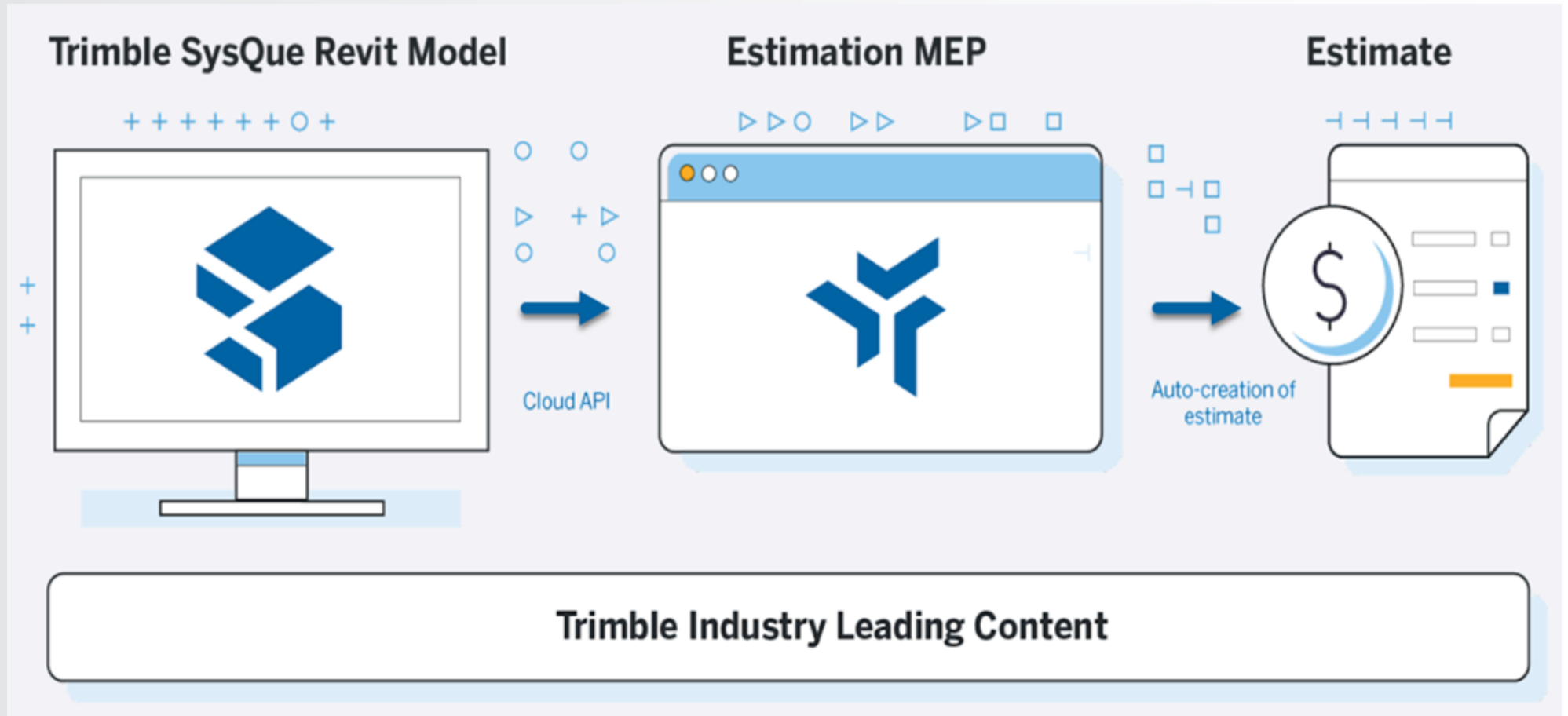




Model Based Estimating Video

2022
business summit

How does it work?



How will you use Model Based Estimating?



Quantity Comparisons

MBE will replace manual re-strip processes to compare the quantities derived from your bid drawings against your issue for construction drawings.



Improve Future Bid Accuracy

Compare original estimates to the coordinated model to verify where you can improve bid accuracy for future projects.



Finalize BOM for Procurement

Determine final quantities, materials, and manufacturers for material buyout.



More Accurate Project Execution

Update construction means and methods based on your coordinated model and finalized materials.



Extend Model Data

Extend your modeling data with catalog numbers and material pricing.



You tell us?

How can you see Model Based Estimating fitting into your current business workflows



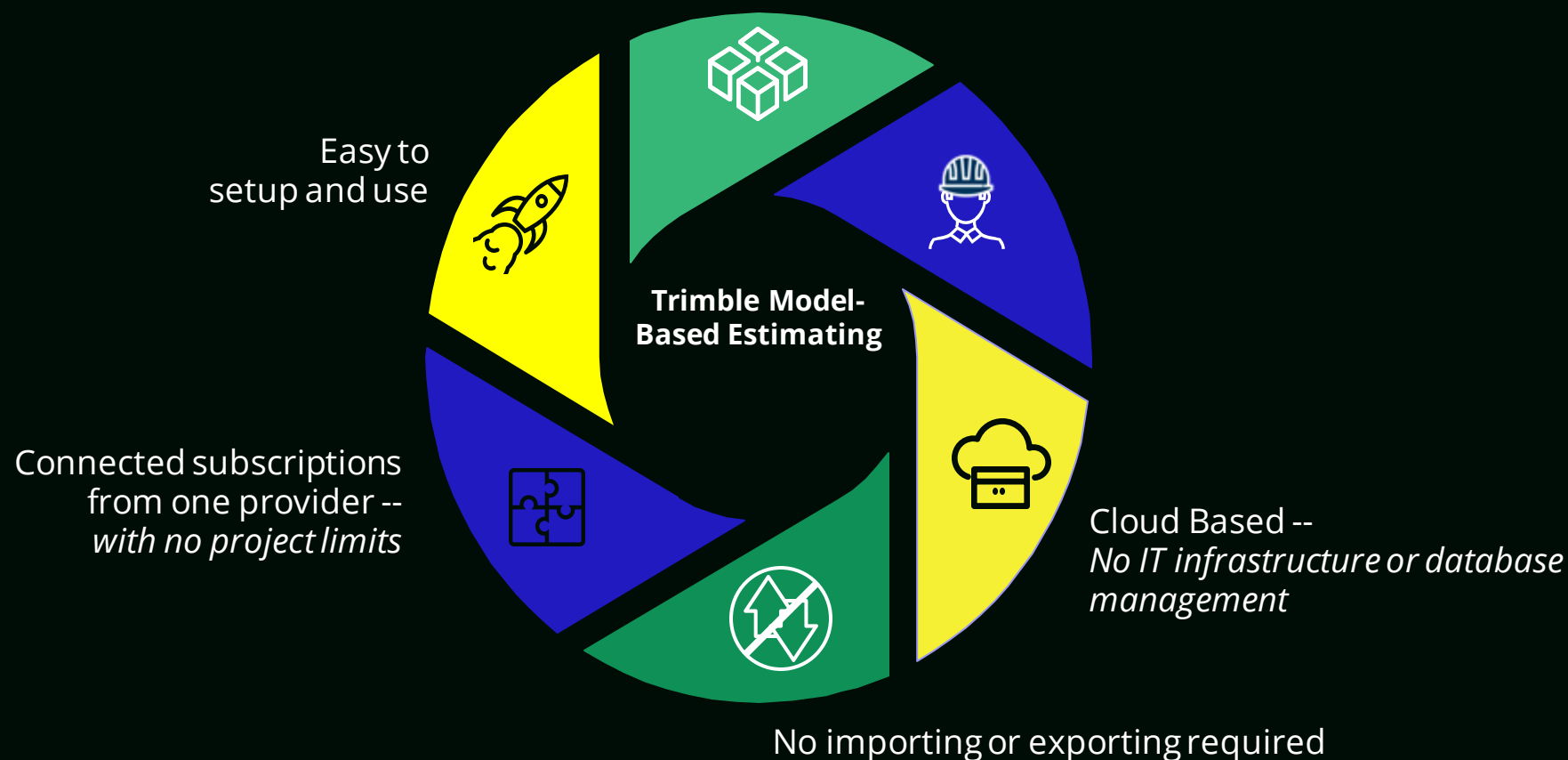
iENG Video

Tim Reidel

2022
business summit

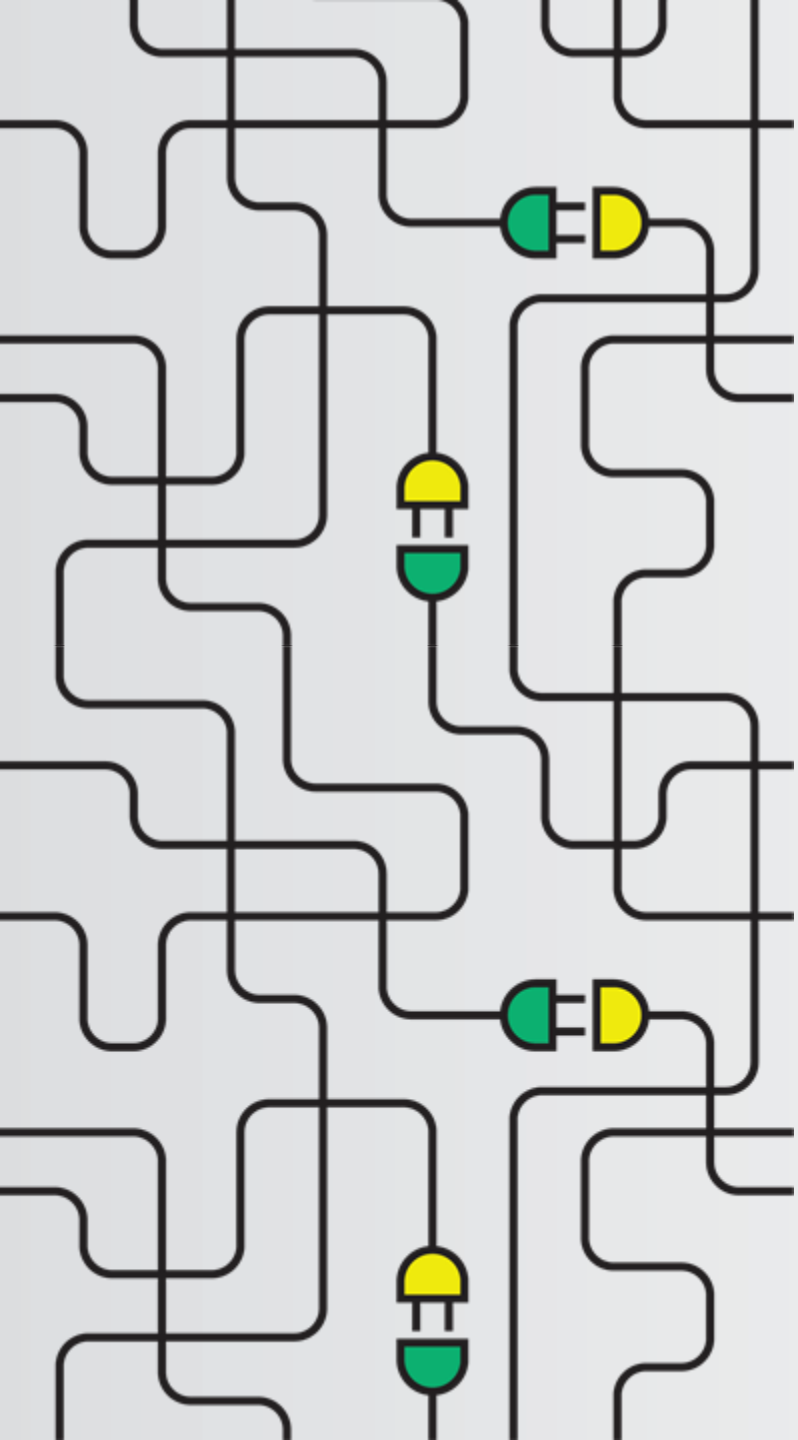
What makes this different from other Model-Based Estimating Workflows?

Powered by managed content



Summary

- Trimble Model-Based Estimating is a seamless workflow enabled between Trimble SysQue and Estimation MEP with industry-leading content at its core.
- Model-Based Estimating has several use cases to enable better project execution and accuracy
- Whether you are a project manager, detailer, or estimator, there is value in leveraging Model-Based Estimating in your workflows.



Questions?



2022
business summit

Thank You

For Questions or Feedback please contact:
judy_miller@trimble.com / doug_elliott@trimble.com

THANK YOU

GRAZIE VINAKA
TERIMA KASIH
TAKK
merci

감사합니다
謝謝
ありがとう